

# Mouse IL-1R2/IL-1 RII/CD121b Protein

Cat. No. IL1-MM1R2

## Description

<b>Source</b>	Recombinant Human IL-1R2/IL-1 RII/CD121b Protein is expressed from HEK293 with His tag at the C-Terminus. It contains Phe14-Glu355.
<b>Accession</b>	P27931
<b>Molecular Weight</b>	The protein has a predicted MW of 39.2 kDa. Due to glycosylation, the protein migrates to 60-70 kDa based on Bis-Tris PAGE result.
<b>Endotoxin</b>	Less than 1EU per $\mu\text{g}$ by the LAL method.
<b>Purity</b>	> 95% as determined by Bis-Tris PAGE > 95% as determined by HPLC

## Formulation and Storage

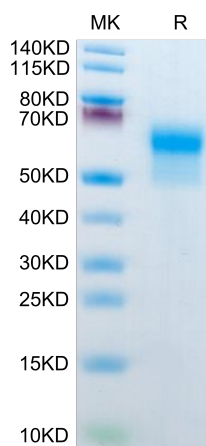
<b>Formulation</b>	Lyophilized from 0.22 $\mu\text{m}$ filtered solution in PBS (pH 7.4). Normally 8% trehalose is added as protectant before lyophilization.
<b>Reconstitution</b>	Centrifuge the tube before opening. Reconstituting to a concentration more than 100 $\mu\text{g}/\text{ml}$ is recommended. Dissolve the lyophilized protein in distilled water.
<b>Storage</b>	-20 to -80°C for 12 months as supplied from date of receipt. -80°C for 3 months after reconstitution. Recommend to aliquot the protein into smaller quantities for optimal storage. Please minimize freeze-thaw cycles.

## Background

Interleukin (IL)-1 has been reported to be involved in the development of tuberculosis (TB). IL1R1 and IL1R2 encode a cytokine receptor that belongs to the IL-1 receptor family. IL1R2 (Interleukin 1 Receptor Type 2) is a Protein Coding gene. Diseases associated with IL1R2 include Endometriosis and Mastitis. Among its related pathways are Hematopoietic cell lineage and IL-1 signaling pathway. Gene Ontology (GO) annotations related to this gene include interleukin-1 receptor activity and interleukin-1, type II, blocking receptor activity.

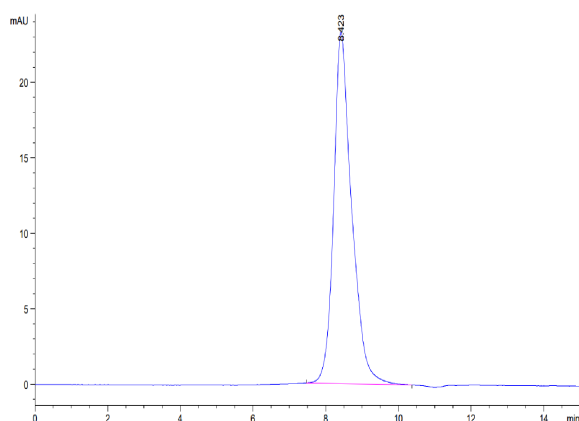
## Assay Data

### Bis-Tris PAGE



Mouse IL-1R2 on Bis-Tris PAGE under reduced condition. The purity is greater than 95%.

### SEC-HPLC



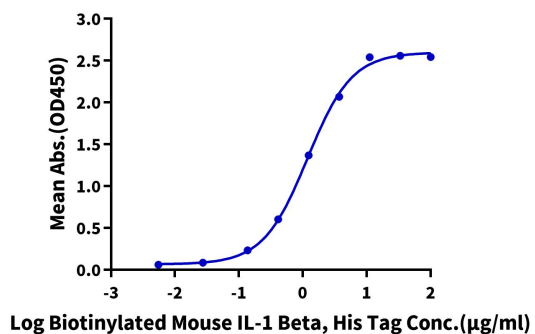
The purity of Mouse IL-1R2 is greater than 95% as determined by SEC-HPLC.

Assay Data

ELISA Data

**Mouse IL-1R2, His Tag ELISA**

0.5µg Mouse IL-1R2, His Tag Per Well



Immobilized Mouse IL-1R2, His Tag at 5µg/ml (100µl/well) on the plate. Dose response curve for Biotinylated Mouse IL-1 Beta, His Tag with the EC50 of 1.2µg/ml determined by ELISA (QC Test).